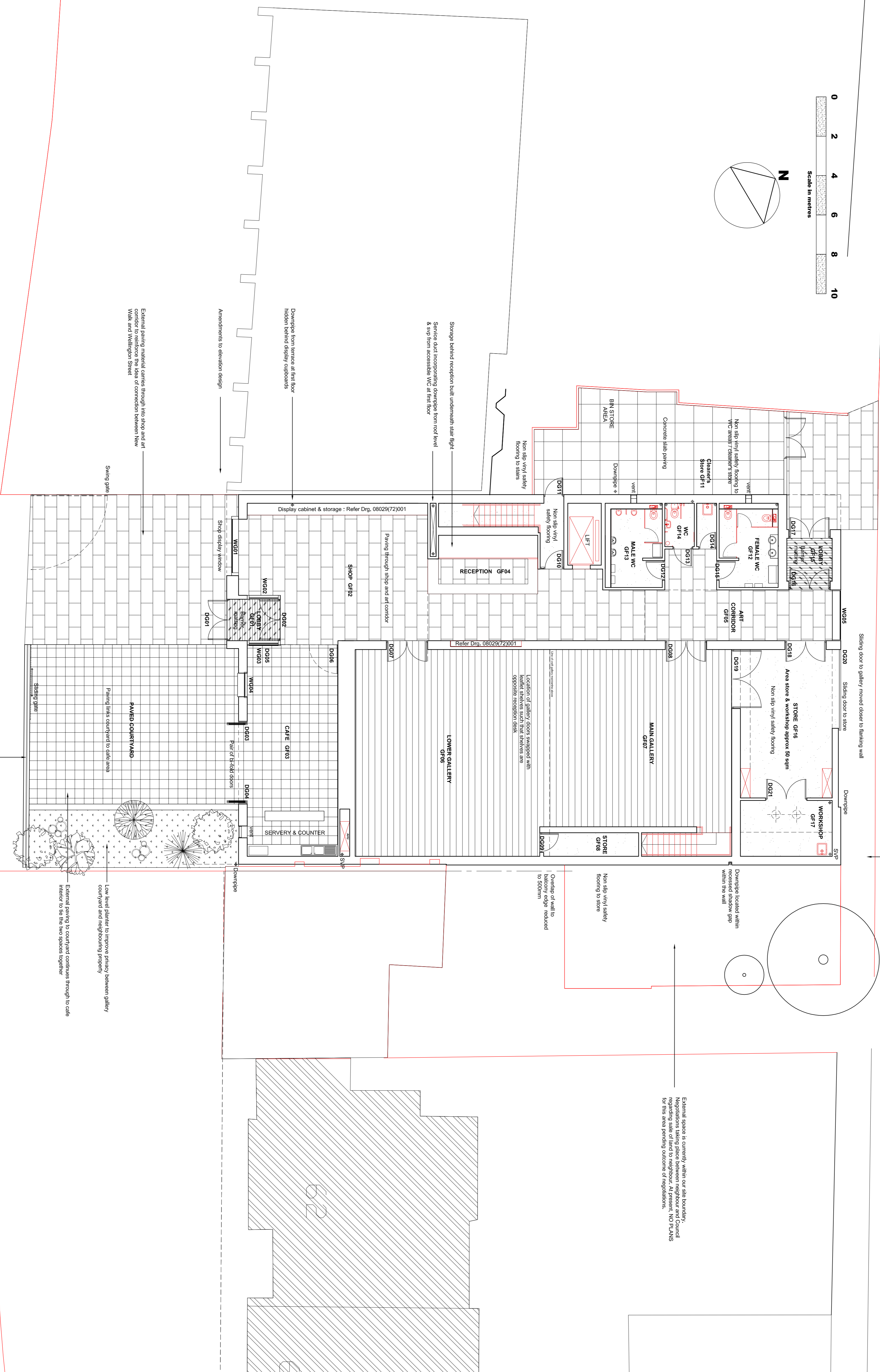
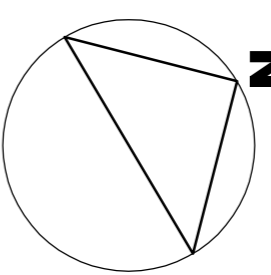
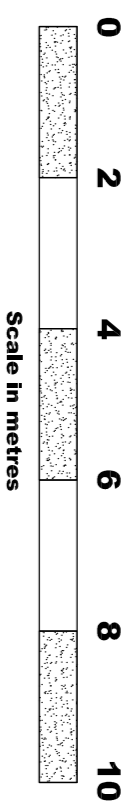


Defined area of paving to match material throughout art corridor and courtyard facing New Walk

WELLINGTON STREET

May be possible to retain tree at this corner of the site

May require escape door from workshop which would need to be set back from pavement line - To discuss with BCO



External space is currently within our site boundary. Negotiations taking place between neighbour and Council regarding sale of land to neighbour. At present, NO PLANS for this area pending outcome of negotiations.

NOTES

1. Refer to figured dimensions, do not scale
2. If in doubt refer to the Architect before work starts
3. All dimensions are to be checked on site
4. The Architect disclaim responsibility for variations from this drawing made without their written consent
5. Please ensure that there have been no additional revisions to this drawing before starting work

REVISIONS

Rev Q 0502 10 - Sliding door to gallery store relocated. Gallery access door/gallery shelf locations swapped over. Overlap of store wall to mezzanine reduced. New Walk openings to elevation amended. Downpipe noted

Rev P 2801 10 - Store & lift core relocated. Client's store and rear lobby narrowed. WC's moved Northwards. Service duct relocated. Gallery door D008 moved. Line of void above art corridor moved. Display cabinet to cafe omitted. Gallery internal stair relocated to earlier location / lowest tread moved to back line of screen wall. Main lobby (GF1) walls amended to spaced panels. Lift height increased.

Rev O 24 1209 - Gallery access door D001 moved to line through wall door of first floor so that structure lines through Rev N 231 209 - Store/Workshop increased in size to approx 300sqm - gallery wall moved. Gallery star moved rooflights & door to store reinstated. wall between cafe and gallery moved.

Rev M 01 11 209 - Gallery as previous plan. Main lobby reinstated. Cafe doors omitted. Opening between cafe and shop increased and doors reconfigured. Shop core & lift moved Northwards. Display cabinet to cafe omitted. Downpipe relocated. Star core reinstated. Escape door relocated. W.C.s and client's store reinstated. Gallery store downpipe relocated. Workshop extension defined. Ballings, planters and low wall to New Walk courtyard added. Doors & windows reinstated.

Rev L 15 1009 - Filled display/storage cupboards added. W.C03 revised. Partitions width amended. Note added.

Rev K 03 1009 - REDESIGN - Gallery & Store mentioned. Cafe projection to New Walk deleted. Secondary accommodation reinstated. Stair & lift moved Northwards. W.C's reinstated. Rear lobby reinstated. Rollings added along New Walk courtyard.

Rev J 010809 - PLANNING APPLICATION

Rev I 310709 - Grid C moved @ Adam. Workshop mezzanine reconfigured. Mechanical plant J112 etc added. Downpipe locations and wall vent pipes added. Floor slabs. Display screens and corridor floor. Handrail to foot of gallery star amended.

Downpipe ground floor behind DWWC located in wall zone

Client
City Council, Leicester

Job
Proposed Contemporary Art Gallery
50 New Walk, Leicester

Drawing
Proposed GA Plan
GROUND FLOOR

scale	date
1:100 (A1)	03/08/09
no.	revision
08029100010	Q
drawn by	gf

To commerce square, the 'boomerker' north/south, ng | His Architects/Grochowowski is a limited liability partnership.

F: 0115 941 1761
F: 0115 950 3675
E: office@arcontext.com
W: www.marsh-grochowowski.com